



INTRACOM

netMod



netMod Installation for RS-232

Windows[®] XP

Table of Contents

Driver Installation Procedure in 6 steps.....	2
Step 1. Connecting netMod	2
Step 2. Startup.....	3
Step 3. Driver Selection.....	3
Step 4. Selection of download location.....	4
Step 5. Certification Message.....	4
Step 6. Driver Installation	5
Check successful netMod installation in the Device Manager.....	6

Driver Installation Procedure in 6 steps

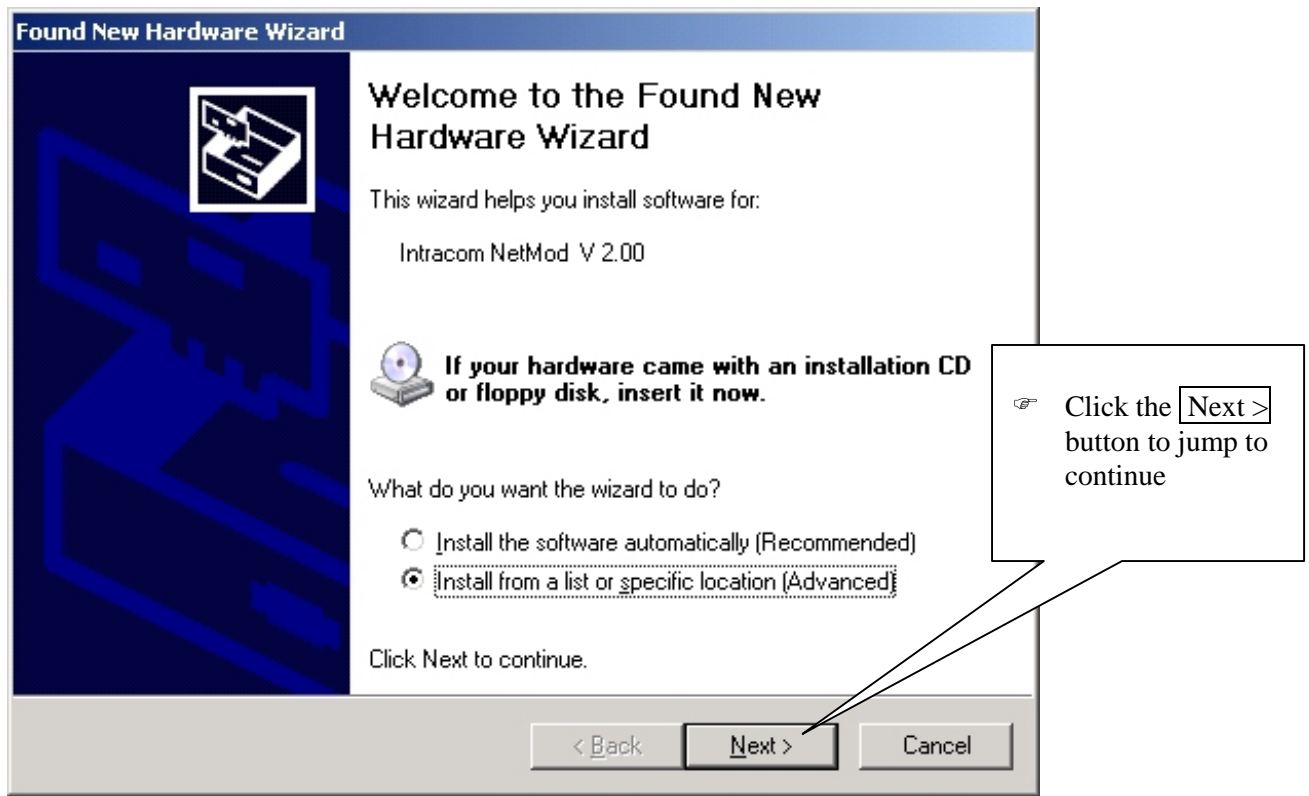
Step 1. Connecting netMod

- ☞ Connect netMod to the U line of the telephone network
 - ☞ Connect netMod to the AC mains power supply
 - ☞ Connect netMod to a free serial port (RS-232) of your PC with the *RS-232 cable*
 - ☞ Turn on your PC (if your PC is running already, no restart is necessary)
- ⇒ *Windows®XP* automatically detects the *netMod* during startup and starts now the installation procedure with the following window:



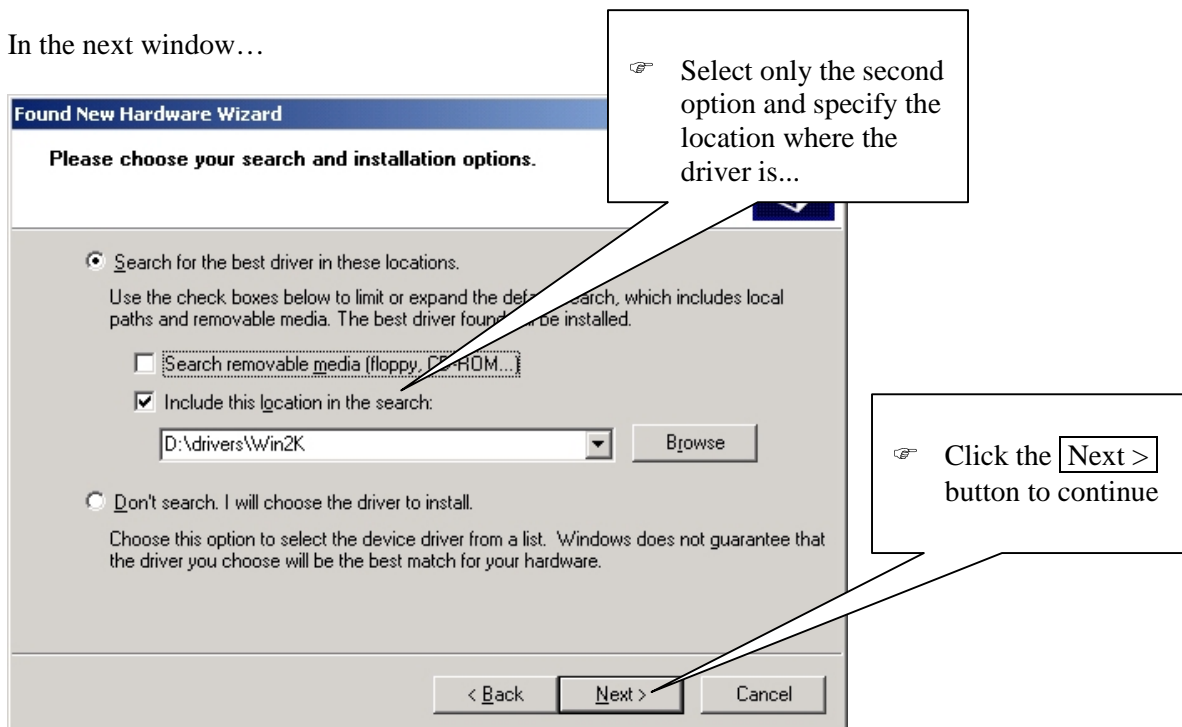
- ☞ Choose the option “Install from a list or specific location (Advanced)” and ...

Step 2. Startup

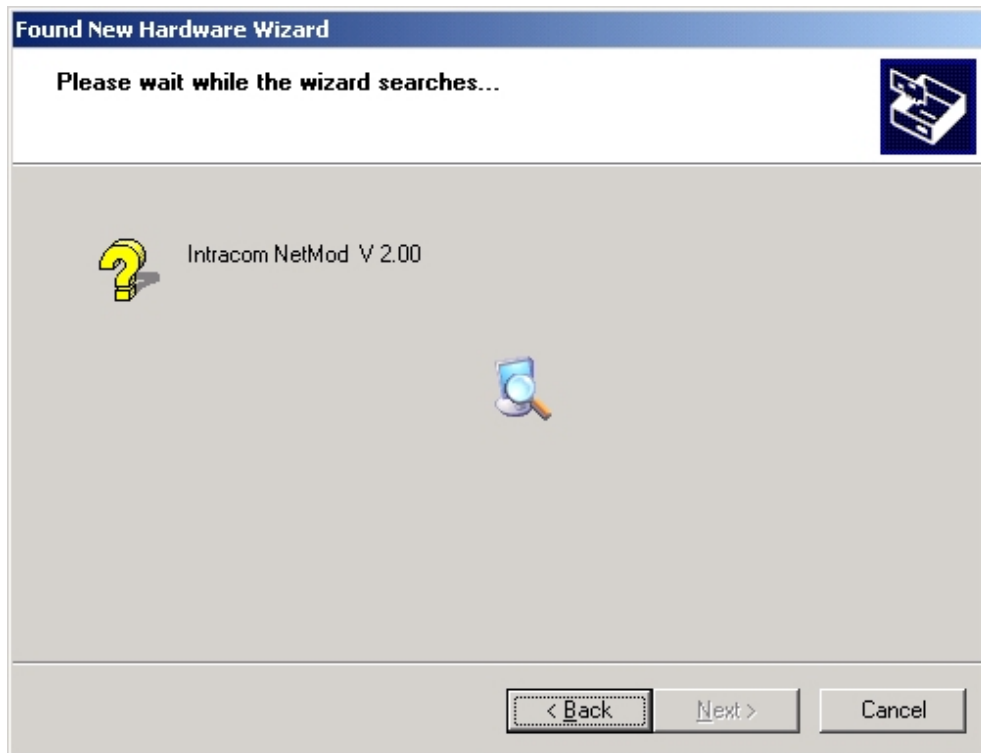


Step 3. Driver Selection

In the next window...

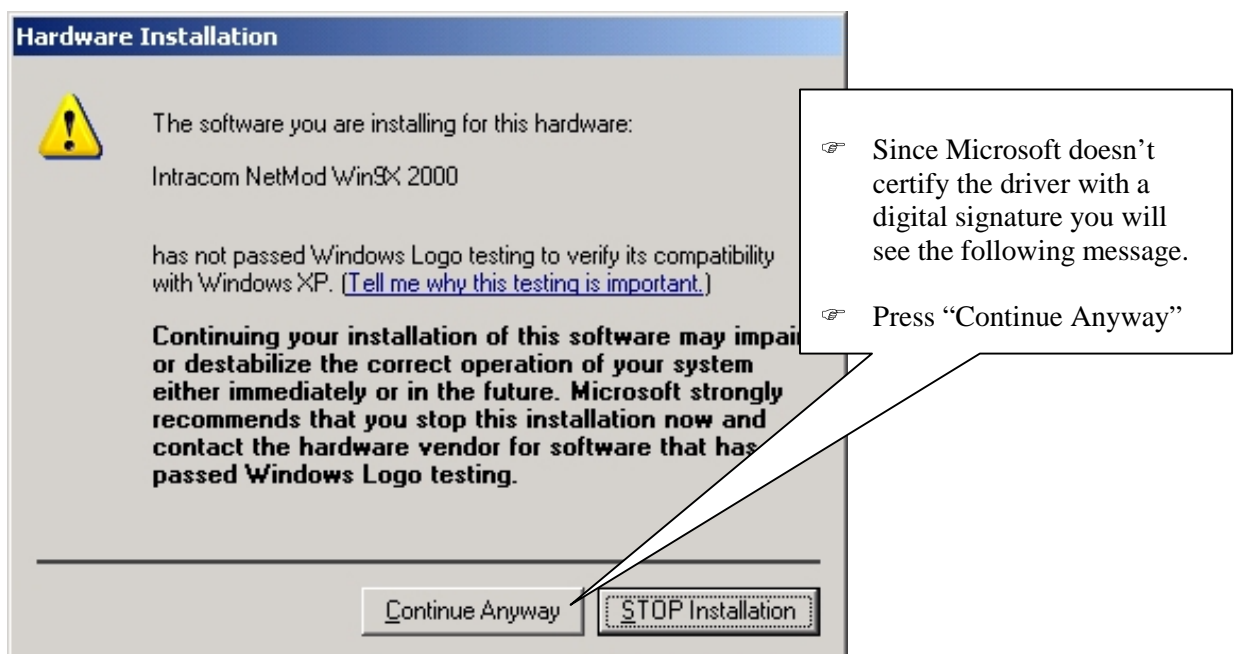


Step 4. Selection of download location



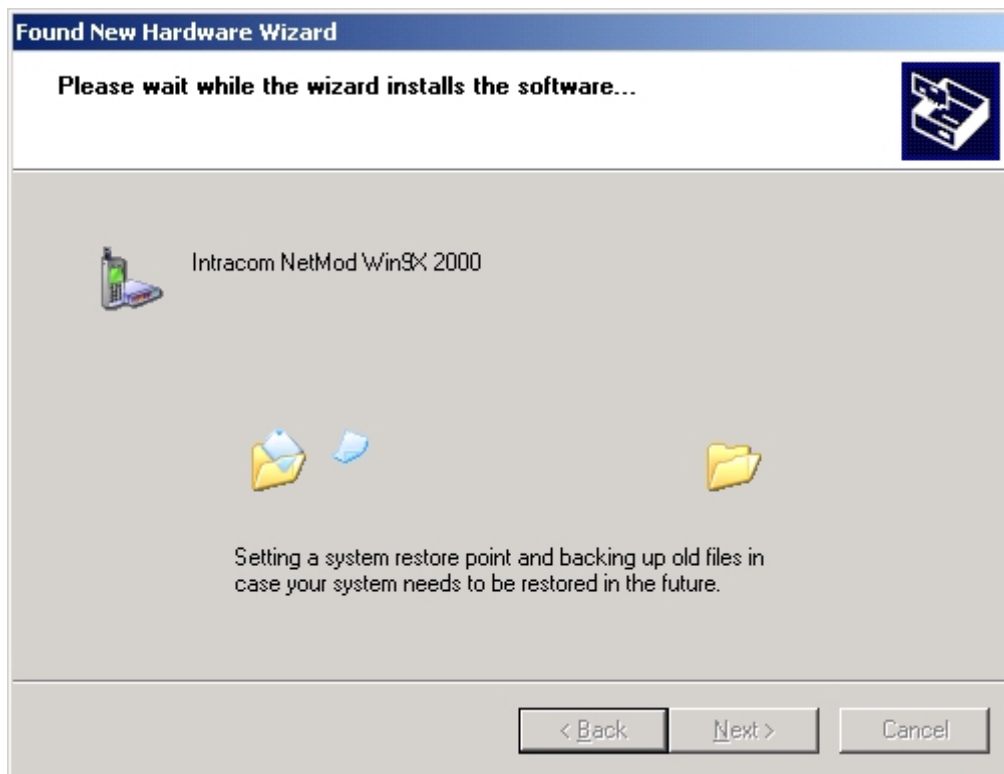
! Windows now search for the appropriate driver file. The next window appears on your screen:

Step 5. Certification Message.

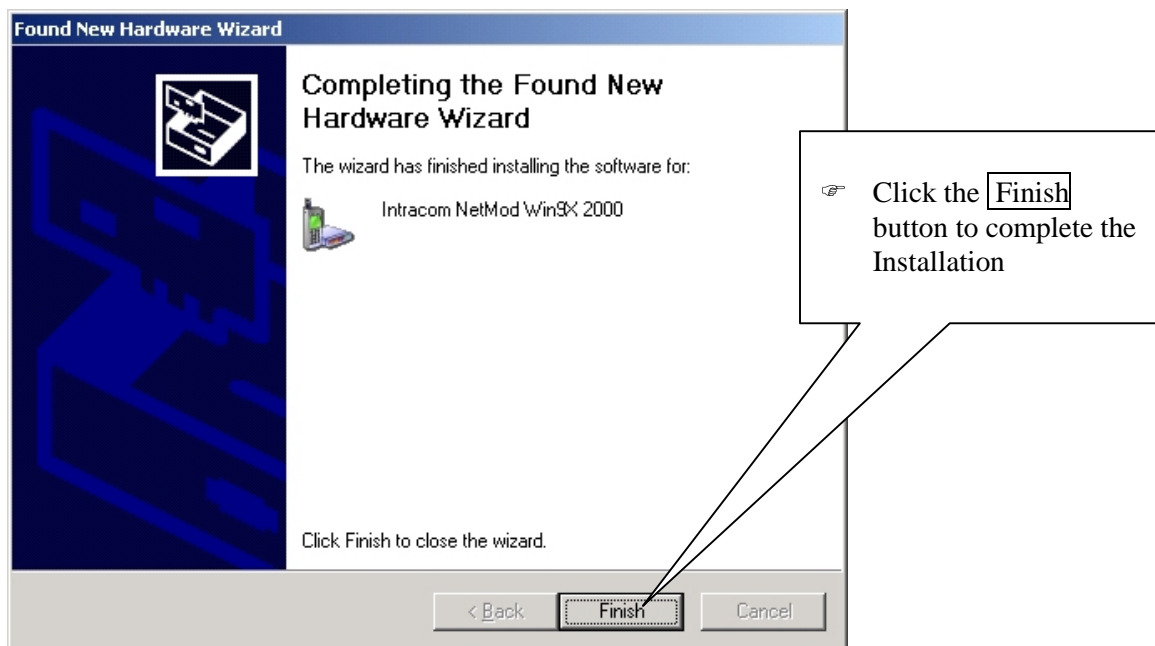


Step 6. Driver Installation.

The *Hardware Wizard* has found the *netMod Driver for Windows® XP* files



... and copies the driver.



Check successful netMod installation in the Device Manager

- ! After successful installation the device *Intracom netMod* will appear in the *Device Manager* Window:

