



INTRACOM

netMod



netMod Installation for RS-232

Windows[®] 95/98

Table of Contents

Setting up netMod for Win 95/98.....	2
Step 1 Computer with plug&play capability (PnP).....	2
Step 2 Setup (PnP not supported).....	4
Loading Drivers from the Internet.....	6
Upgrade netMod's firmware.....	6
CAPI Drivers.....	6

SETTINGS ON THE PERSONAL COMPUTER VIA RS232

netMod can be easily set up and function with all the commonly used operating systems (DOS, Win 3.1, Win 95, Win 98, etc.).

Setting up netMod for Win 95/98

STEP 1. Computer with Plug & Play capability (PnP)

Turn the computer on. Make sure that the netMod is already on. The computer will report that new software is added. It will recognise netMod and start the installation with the following dialogue box.

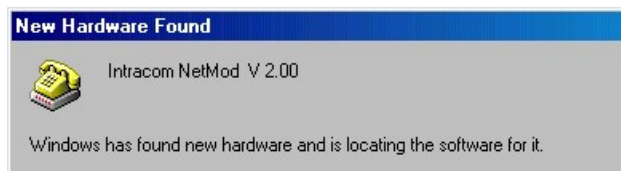


Figure 3 New Hardware Found



Click on the <Next> button and the following window will appear on your screen:

Figure 4 Add New Hardware Wizard



Select the disk driver where the driver files are stored and click <Next>.

Figure 5 Add New Hardware Wizard

⇒ Windows have found the correct driver for netMod



Click on the button <Next>.

Figure 6 Add New Hardware Wizard



The files have been copied. Click on <Finish> button to complete the installation

Figure 7 Add New Hardware Wizard

⇒ netMod's packaging, in folder <drivers>.

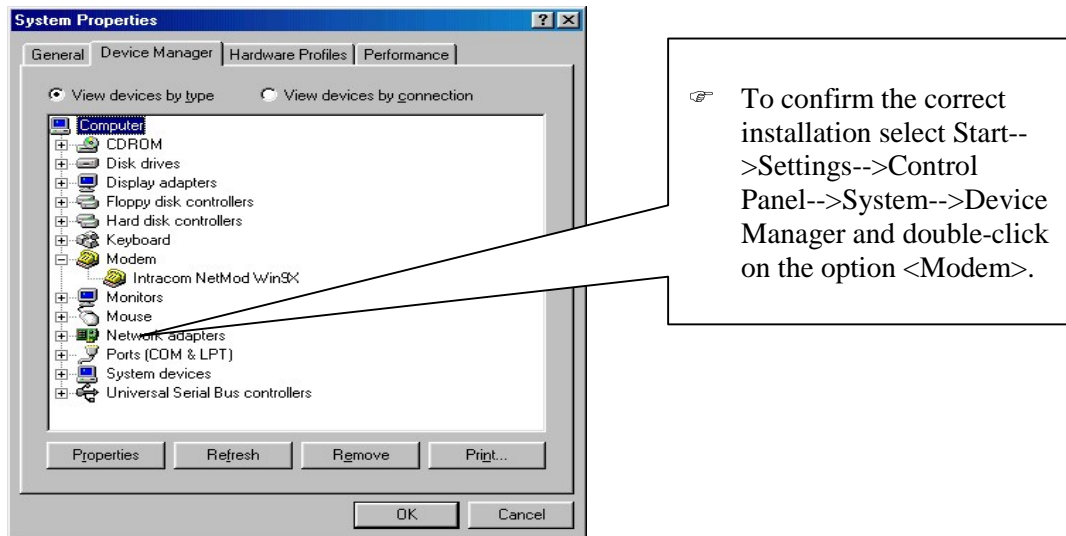


Figure 8 System Properties

Step 2. Manual Set Up (PnP not supported)

Open the <Control Panel> in your PC. Double click on <Modems> icon and the next window will appear on your screen. If you have already installed modems on your PC, then click at the <Add> of the window that opens on your screen.

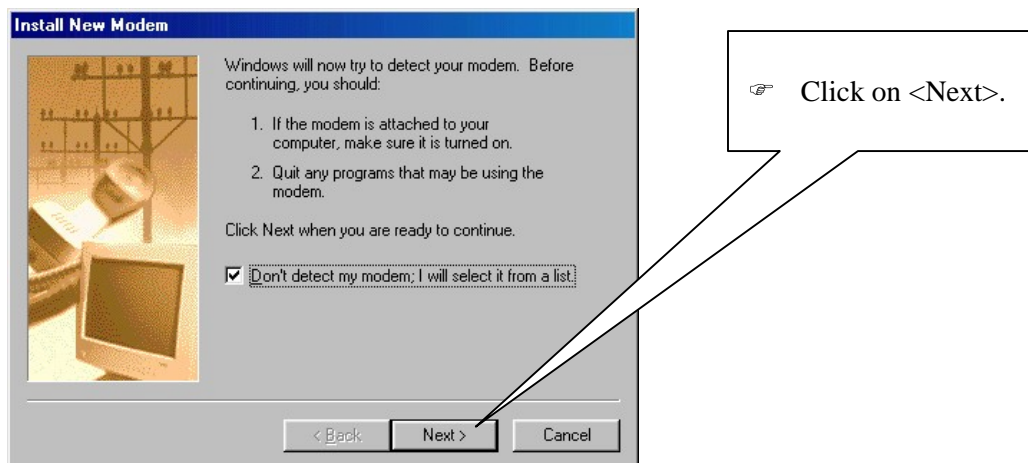


Figure 9 Install New Modem

⇒ On the next window click on <Have Disk>. The next dialogue box will appear on your screen. On the next window click on <Have Disk>. The next dialogue box will appear on your screen.



Figure 10 Install From Disk

Enter the location or the drive where the drivers files are stored and click <OK>.

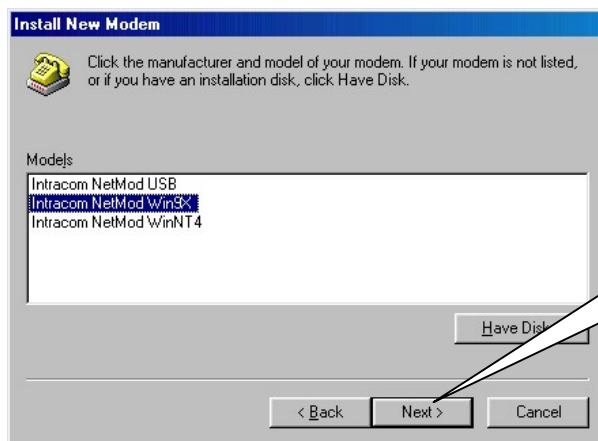


Figure 11 Install New Modem

Select the appropriate driver for netMod and click <Next>.

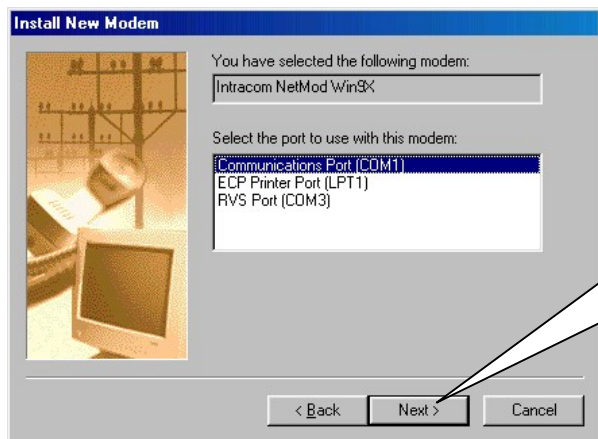


Figure 12 Install New Modem

Select the appropriate serial port and click <Next>. Windows will install your netMod and the next window will appear on your screen.

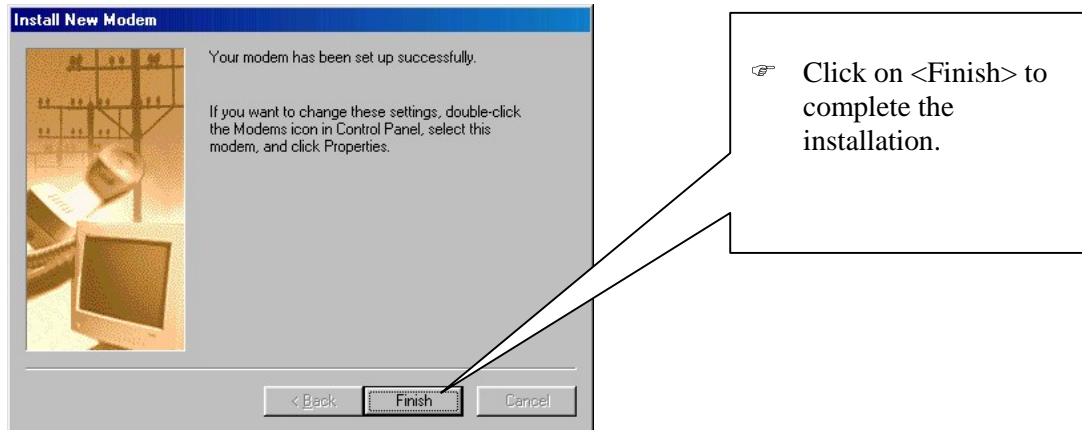


Figure 13 Install New Modem

Loading drivers from the Internet

In case that you want to update the drivers or netMod's firmware, you can download and the corresponding files on your hard disk. These files can be found at INTRACOM's Helpdesk page (<http://netmod.intracom.gr>).

To install the new driver, follow the procedure below:

- ☞ Open the <Control Panel>. Double click on the system's icon and select the page <Device Manager>. Double click on this selection or press <+> on the modem's icon.
- ☞ Click on the <Properties> selection and then select the page <Driver>.
- ☞ Press the selection <Update Driver...> and follow the installation instructions, as they are given through Windows.

Upgrade netMod's firmware

In order to upgrade netMod's firmware, follow the procedure described in the CD-ROM, included in netMod's packaging or in INTRACOM's Helpdesk page (<http://netmod.intracom.gr>).

CAPI drivers

CAPI drivers developed for netMod are provided in the CD-ROM, included in netMod's packaging or in INTRACOM's Helpdesk page (<http://netmod.intracom.gr>).