



**INTRACOM**

**netMod**



netMod Installation for RS-232

**Windows<sup>®</sup> NT4**

## Table of Contents

<b>netMod Installetion instructions under Windows NT4 .....</b>	<b>2</b>
General.....	2
Dial-up Networking.....	5
Dial-up Connection.....	7

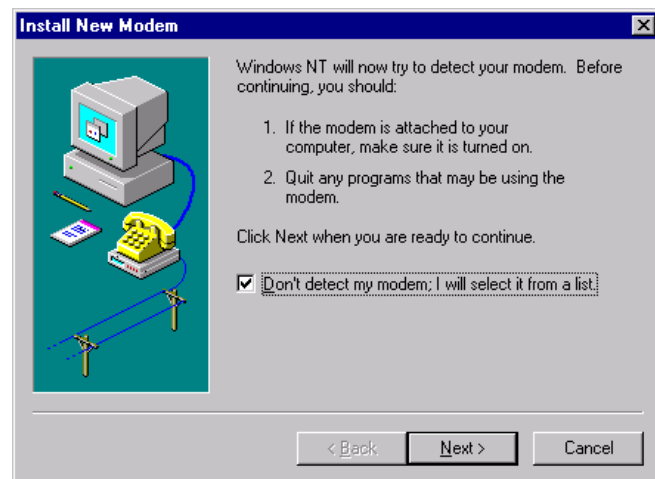
## netMod Installation instructions under Windows NT4

### General

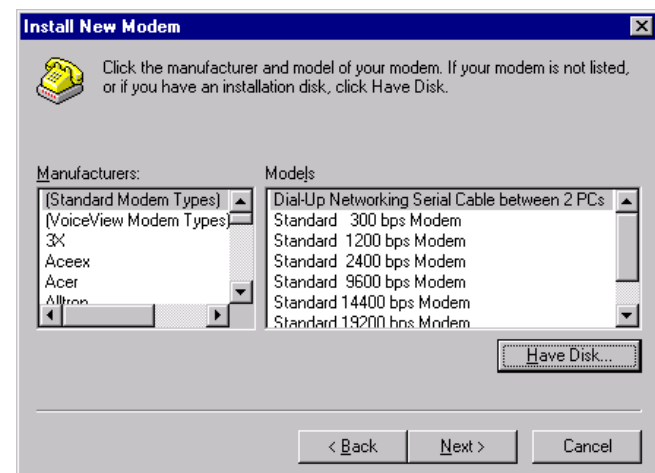
- ! Note: During the installation, the NT4 installation CD may be needed. After the installation procedure completion, you should install the latest version of the service pack.

☞ From the <Control Panel> select <Modems>.

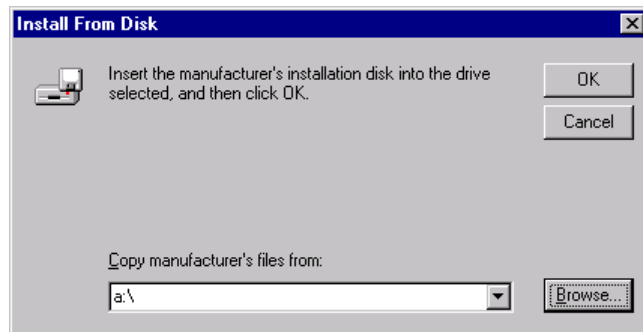
☞ In the window <Install New Modem> select the option <Don't detect my modem; I will select it from a list.> and click on the <Next> button.



☞ In the next window click on the <Have Disk> button.

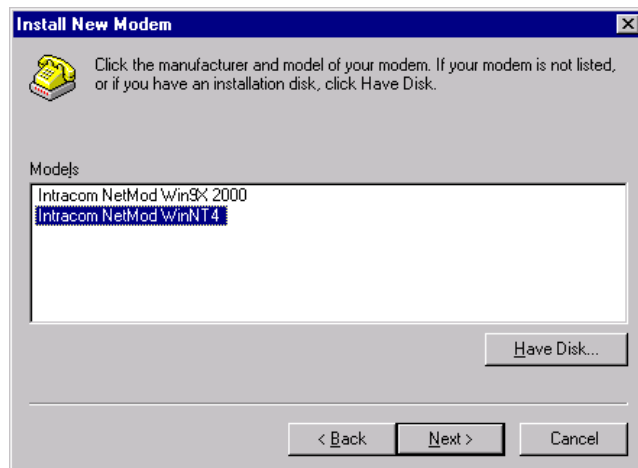


☞ In the next window click on the **<Browse>** button and type the path where the drivers are located.

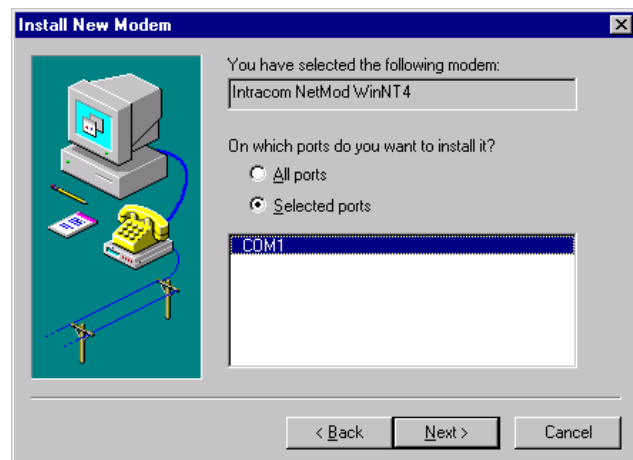


☞ Then press the **<Open>** and **<OK>** buttons.

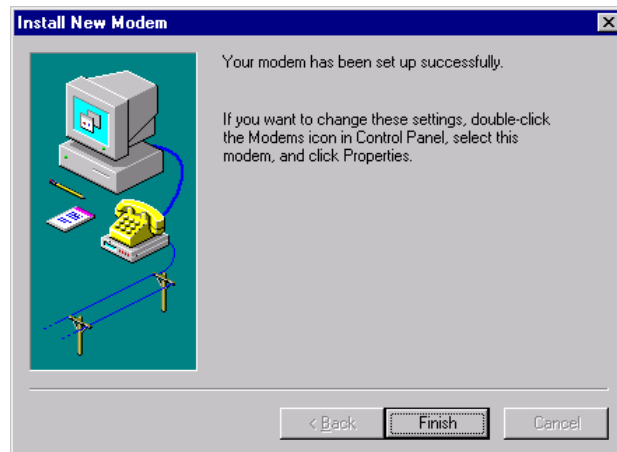
☞ In the next window select **<Intracom NetMod WinNT4>** and click on the **<Next>** button.



☞ Select the port where netMod is connected and click on the **<Next>** button.



☞ Click on the <**Finish**> button.



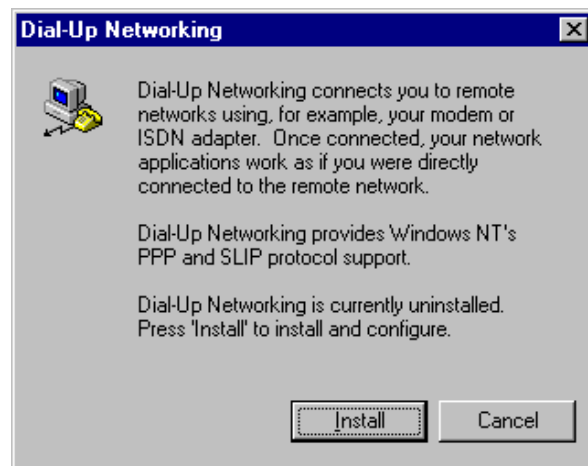
☞ Opening the <**Modem Properties**> window, the screen shall display the next window. Click on the <**Close**> button.

⇒ The **netMod** installation is completed.

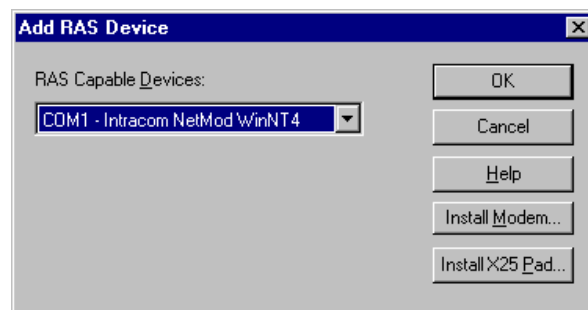


## Dial-Up Networking

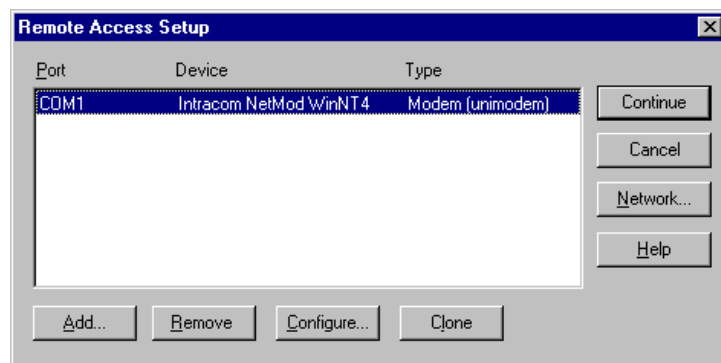
- From <My Computer> select the <Dial-Up Networking> window and click on the <Install> button.



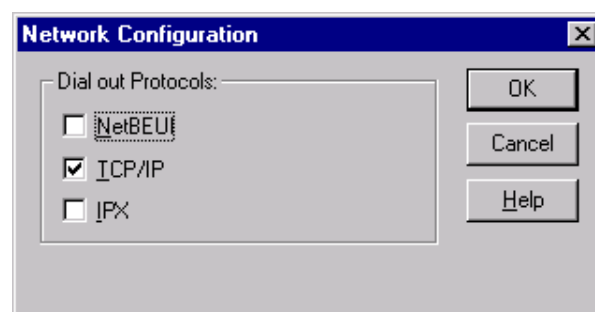
- In the <Add RAS Device> window click on the <OK> button.



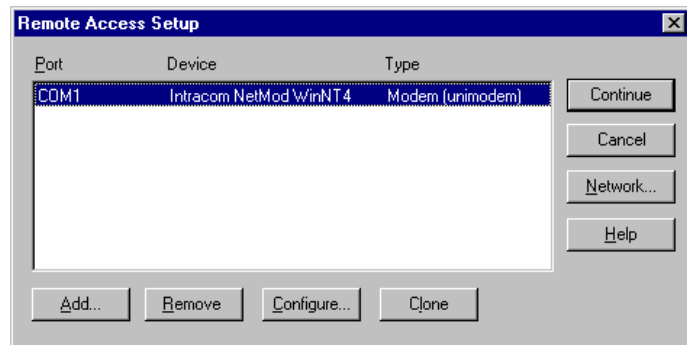
- In the next window click on the <Network> button.



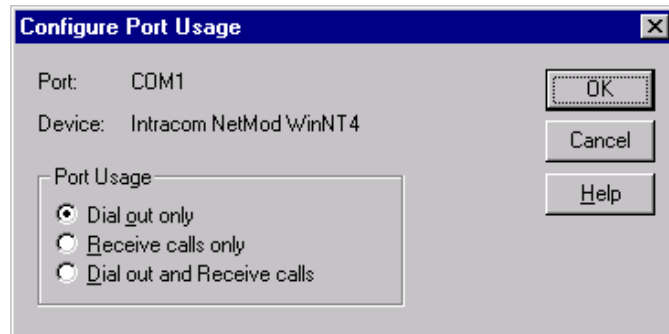
- Select the requested protocol (TCP/IP for Internet connections) and click on the <OK> button.



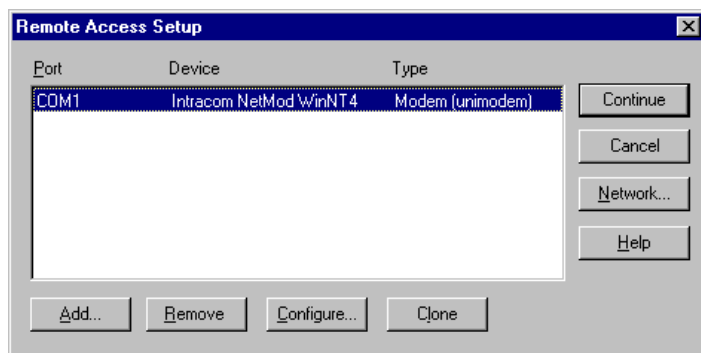
- Then click on the **<Configure>** button.



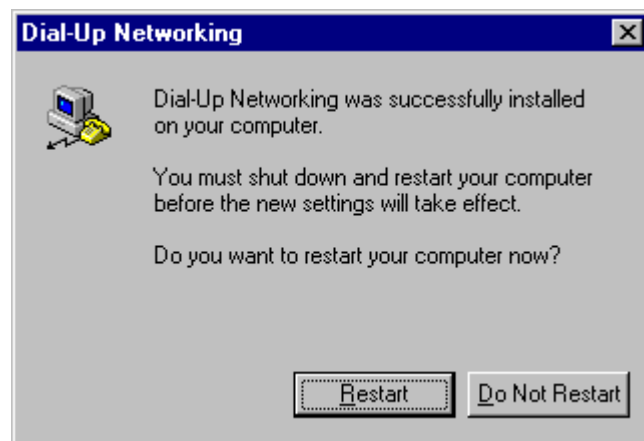
- Select the type of calls and click on the **<OK>** button.



- Click on the **<Continue>** button.



- On the next window click on the **<Restart>** button.

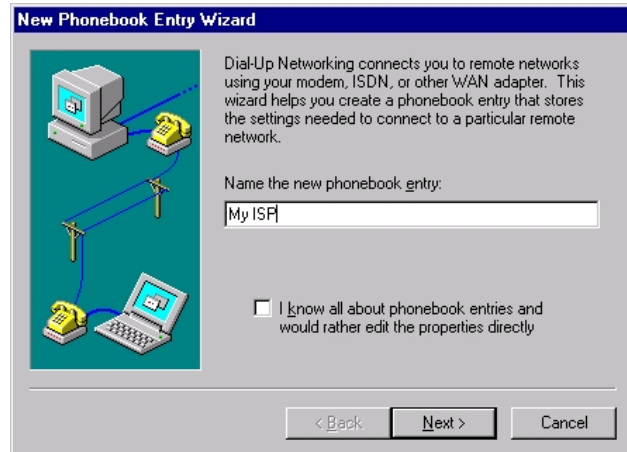


- !** **Note:** The procedure described above may be slightly different, if there is already another modem and RAS installed.

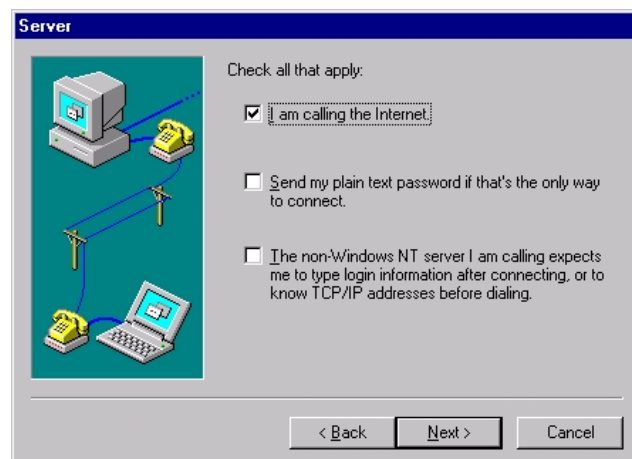
## Dial-Up Connection

In order to use netMod as a Dial-up modem there has to be an ISDN Internet account of 64 kbps or 128 kbps.

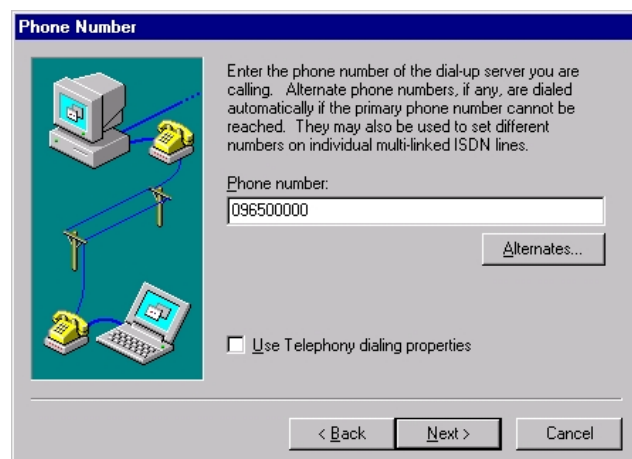
- Follow the menu **<Start → Programs → Accessories>** and select **<DialUp Networking>**. Type the name of your connection and click on the **<Next>** button.



- Select the **<I am calling the Internet>** field and click on the **<Next>** button.



- Type your ISP's call number and then click on the **<Next>** button.

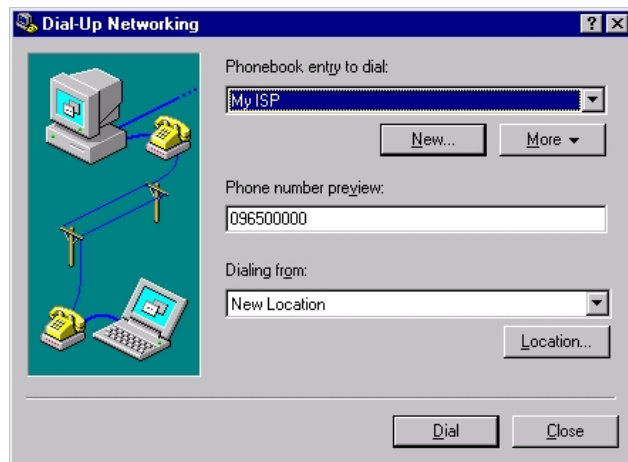




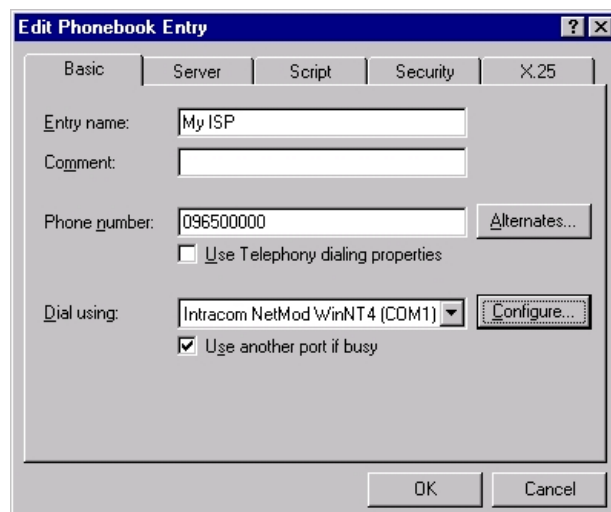
- On the next window click on the **<Finish>** button in order to proceed with further adjustments.



- On the next window all the adjustments, that have been performed during the previous steps can be viewed. In order to proceed with our configuration, click on the **<More>** button and then select **<Edit entry and modem properties>**.

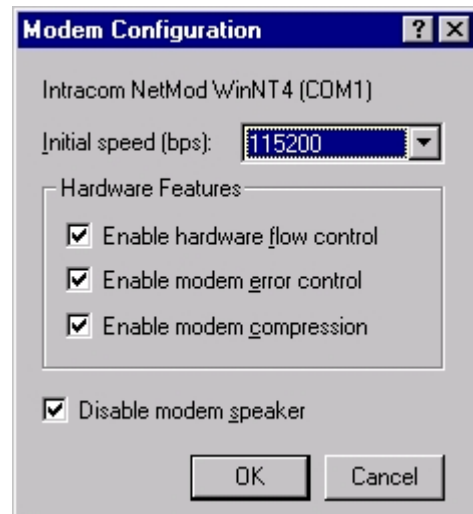


- On the next window the connection name and number can be changed. Click on the **<Configure>** button.



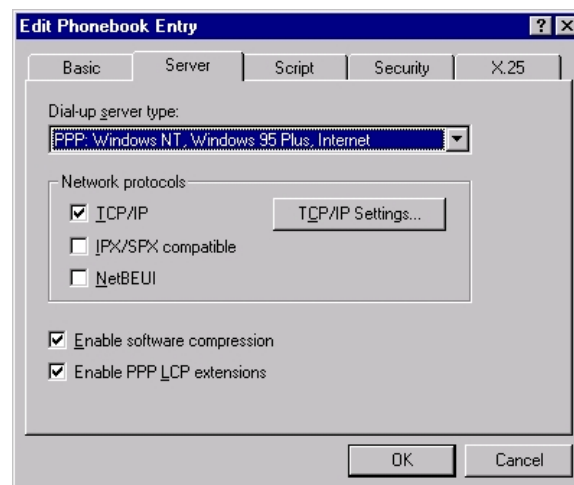
- ☞ Select all the options concerning the modem and adjust the serial port data speed to 115200 bps.

**The adjustments shall be as they appear on the next window.**

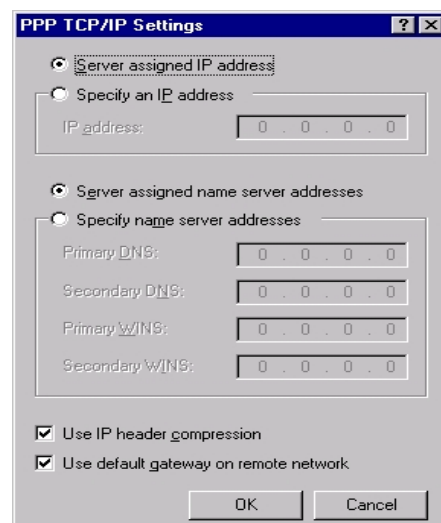


- ! The selection of the <Disable modem speaker> is not critical, since the ISDN modems do not include a speaker.

- ☞ On the next window select the <Server> tab and then select the <TCP/IP> connection protocol and click on the <TCP/IP Settings> button.

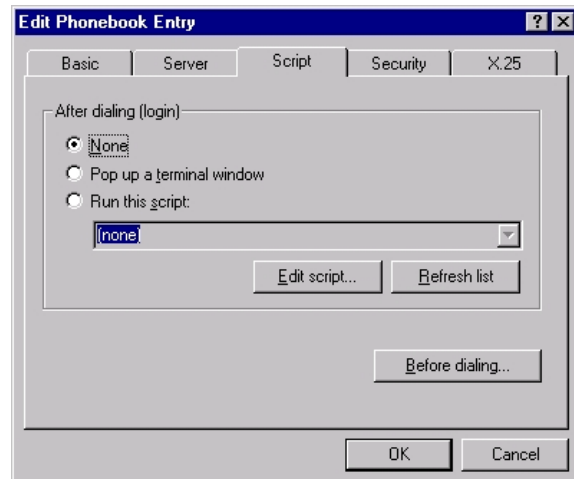


- ☞ Most of the **ISPs** give dynamically the **IP address** and the **DNS servers**. In other cases, this information is given to the user by the **ISP** and the user has to enter it in the appropriate fields.

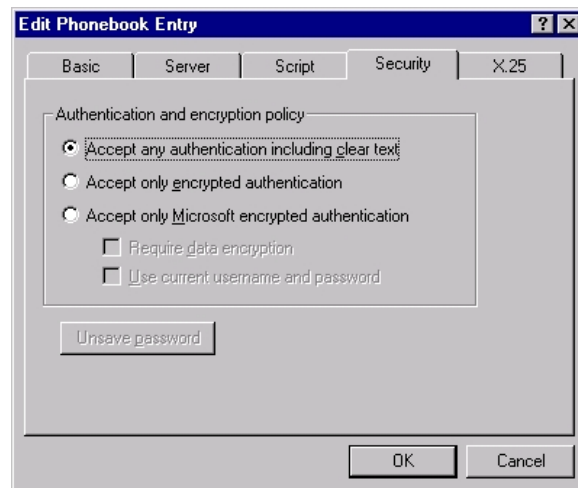


- ☞ In the <**Script**> tab leave the <**None**> field selected, unless the ISP does not support **CHAP** or **PAP** authentication. In this case you shall select one of the other options.

- ! In most countries (i.e. Greece) all the **ISPs** usually support **PAP** – **CHAP** authentication.



- ☞ In the <**Security**> tab select the first option. Then click on the <**OK**> button and then on the next window that appears the <**Dial**> button.



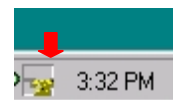
- ☞ In the next window type your username and password, provided by your ISP. If you don't wish to type your username and password each time you connect on the Internet, click the <**Save password**> field. Then click on the <**OK**> button.



⇒ The Internet connection procedure starts as shown on the next windows.



⇒ The icon at the Windows Task Bar (on the left side of the clock) indicates that the connection has been established successfully.



☞ By right clicking on the connection icon and selecting **<Open Dial-Up Monitor>** the next window appears on the screen displaying the status of the connection.

